



# INVL Series-Long Standby Life

## INVL12-120 (12V 121Ah)

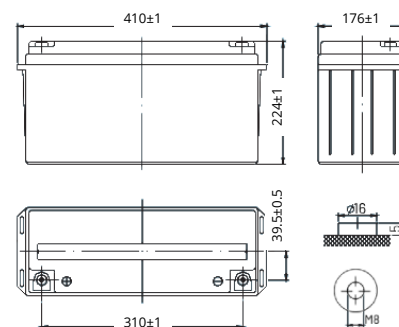
# INVERMEXA

### Performance Characteristics

Nominal Voltage	12V
Number of cell	6
Design Life	10 years
Nominal Capacity 25°C	
• 10 hour rate (12.1A, 10.5V)	121.0Ah
• 5 hour rate (19.2A, 10.5V)	96.0Ah
• 1 hour rate (73.3A, 9.6V)	73.3Ah
Internal Resistance	
• Fully Charged Battery 25°C	<5.3mOhms
Self-Discharge	
• 3% of capacity declined per month at 20°C	
Operating Temperature Range	
• Discharge	-20~60°C
• Charge	-10~60°C
• Storage	-20~60°C
Max. Discharge Current 25°C	950A (5s)
Short Circuit Current	2250A
Charge Methods: Constant Voltage Charge 25°C	
• Cycle use	2.40-2.45VPC
• Maximum Charging Current	36.0A
• Temperature compensation	-30mV/°C
• Standby use	2.20-2.30VPC
• Temperature compensation	-20mV/°C
Dimensions and Weight	
• Length (mm/inch)	410 / 16.14
• Width (mm/inch)	176 / 6.93
• Height (mm/inch)	224 / 8.82
• Total Height (mm/inch)	224 / 8.82
• Approx. Weight (Kg/lbs)*	33.5 / 73.9
*Weight deviation: ~5%	



### Layout



### Discharge Constant Current (Amperes at 77°F 25°C)

End Point Volts/Cell	10min	15min	30min	1h	3h	5h	10h	20h
1.60V	-	-	117	73.3	29.9	20.3	12.4	6.43
1.65V	-	-	114	72.8	29.3	20.1	12.3	6.41
1.70V	-	-	110	71.3	28.7	19.7	12.2	6.38
1.75V	-	-	106	69.1	28.0	19.2	12.1	6.35
1.80V	-	-	104	67.0	27.2	18.9	12.0	6.30

### Discharge Constant Power (Watts/cell at 77°F 25°C)

End Point Volts/Cell	10min	15min	30min	45min	1h	2h	3h	5h
1.60V	-	-	225	159	147	82	58.0	40.7
1.65V	-	-	218	156	145	80	57.3	40.5
1.70V	-	-	211	153	143	79	56.6	40.2
1.75V	-	-	204	149	139	77	56.0	40.0
1.80V	-	-	198	146	134	75	55.0	39.6



# INVL Series-Long Standby Life INVL12-120 (12V 121Ah)

# INVERMEXA

## General features

- 12 years design life (25°C)
- Grid refining technology and the thicker plates are used to extend the battery standby life and reduce the plate grid corrosion speed.
- Using oxygen recombination technology: maintenance-free
- Unique vent valve design: control water losing, prevent air and spark going inside

## Standards

- Compliance with IEC 60896 standards, EU Battery Directive.
- UL, CE Certified.
- Manufactured under ISO45001, ISO9001 and ISO14001 certified production facilities.

## Applications

- UPS and EPS
- Emergency light
- Railway signal and aircraft signal system
- Marine and power stations
- Alarm and security system
- Electronic apparatus and equipment
- Communication power supply, DC power supply

